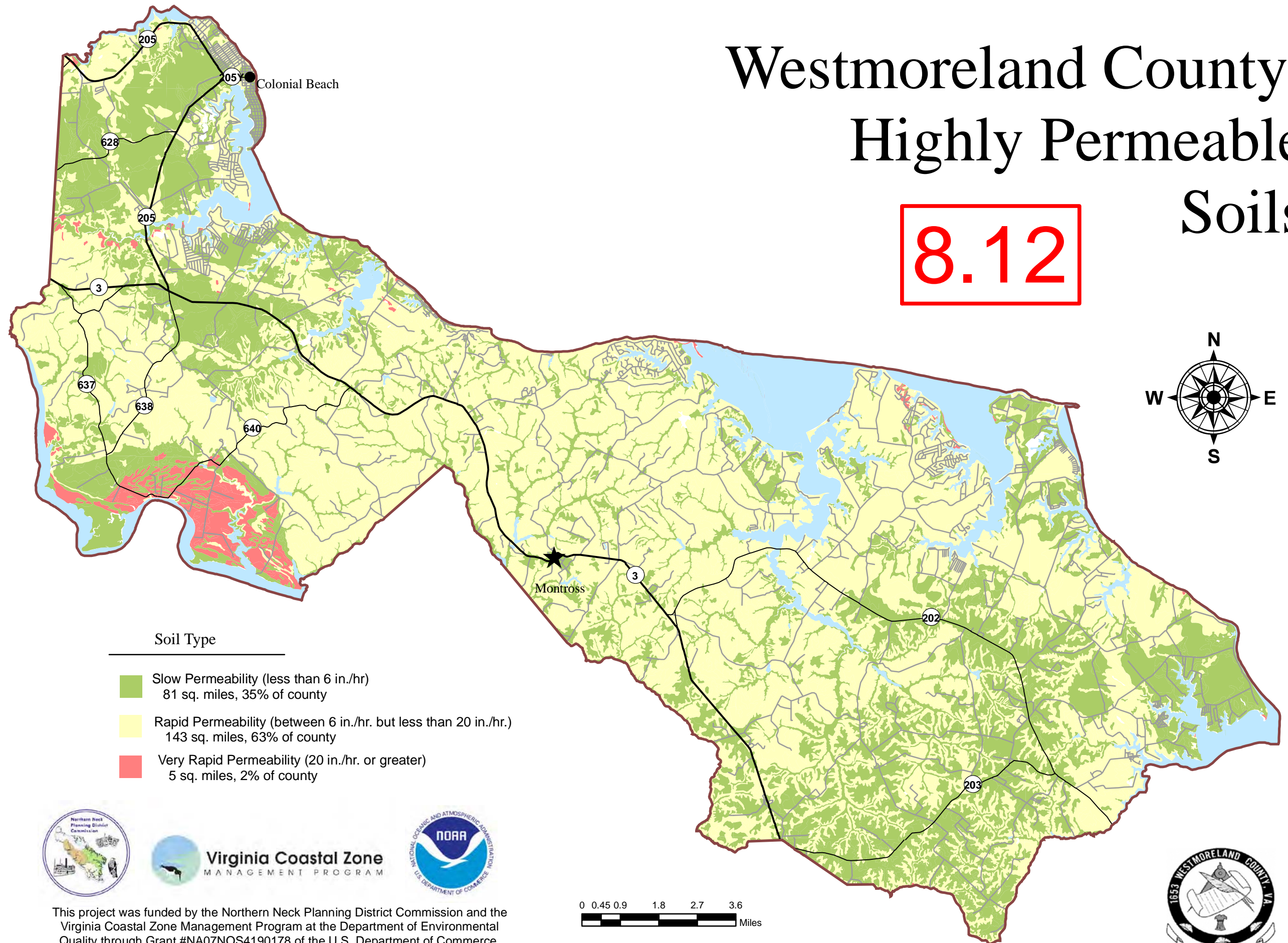


Westmoreland County: Highly Permeable Soils

8.12

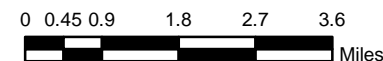


Soil Type

- Slow Permeability (less than 6 in./hr)
81 sq. miles, 35% of county
- Rapid Permeability (between 6 in./hr. but less than 20 in./hr.)
143 sq. miles, 63% of county
- Very Rapid Permeability (20 in./hr. or greater)
5 sq. miles, 2% of county



This project was funded by the Northern Neck Planning District Commission and the Virginia Coastal Zone Management Program at the Department of Environmental Quality through Grant #NA07NOS4190178 of the U.S. Department of Commerce, National Oceanic and Atmospheric Administration, under the Coastal Zone Management Act of 1972, as amended. Map created March 2009.



Data Sources: Hydric Soils: USDA SSURGO Soils, 2006 and USDA Soil Survey, 1981.
Shoreline: USGS 1:100,000 DLG's
Roads: USGS 1:100,000 DLG's

