

2019 Novel Coronavirus (COVID-19)

Briefing for Local Leadership

Richard Williams, MD, MPH

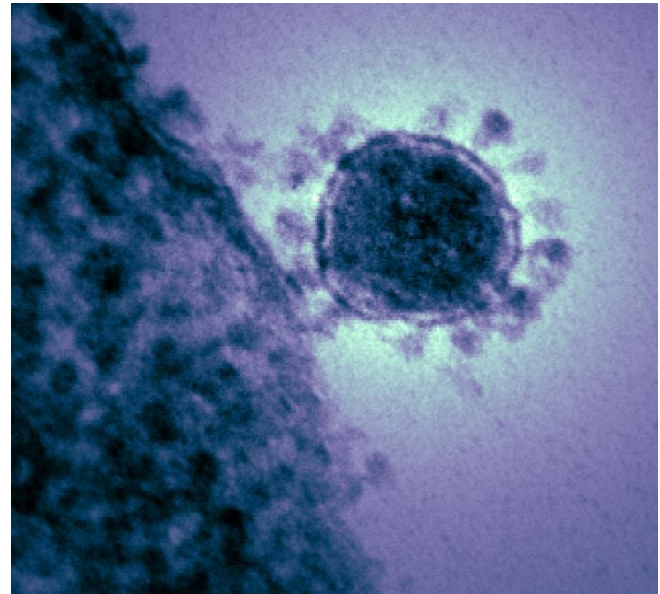
Health Director

Three Rivers Health District

Updated 3/05/2020

Coronaviruses that Infect People

- ❖ 4 cause the common cold
- ❖ 2 cause severe lung infection (SARS and MERS)
- ❖ Spread through coughing, sneezing or close personal contact
- ❖ Symptoms start 2-14 days after exposure



2019 Novel Coronavirus
(SARS-CoV-2)

COVID-19 Compared to Past CoV Epidemics

as of 03/05/2020

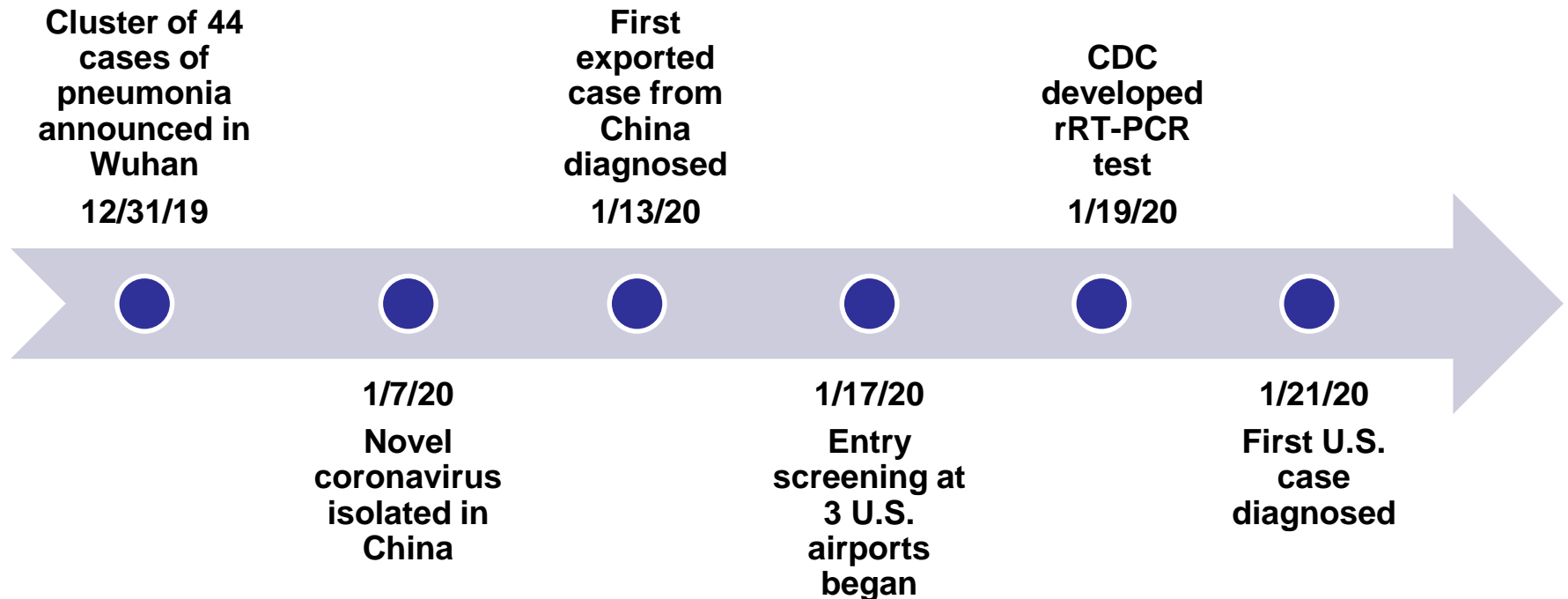
CoV	Origin	Cases	Deaths
COVID-19 (As of 3/03/2020)	Dec 2019 (China)	96,888	3,305 CFR = 3.4%?
MERS-CoV	2012 (Saudi Arabia)	2,494	858 CFR = 34%
SARS-CoV	2002 (China)	8,098 (None since 2004)	774 CFR = 10%

*Reported by the World Health Organization

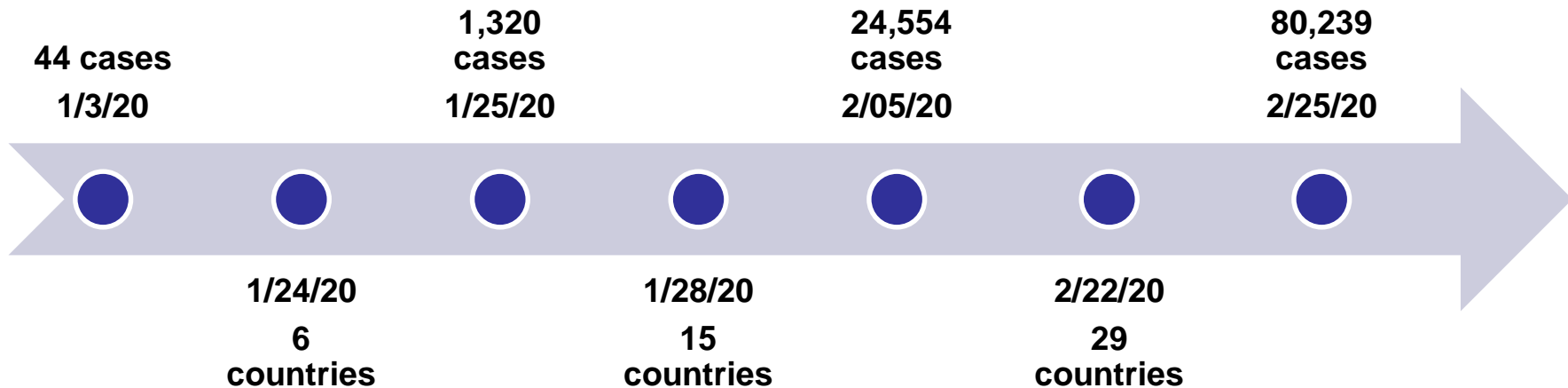
How Contagious Is It?

Disease	R_0
MERS-CoV	< 1
Seasonal influenza	1-2
SARS-CoV	3
COVID-19 (SARS-CoV-2)	Estimates: 1.4-3.9
Measles	12-18

When Did the Outbreak Start?



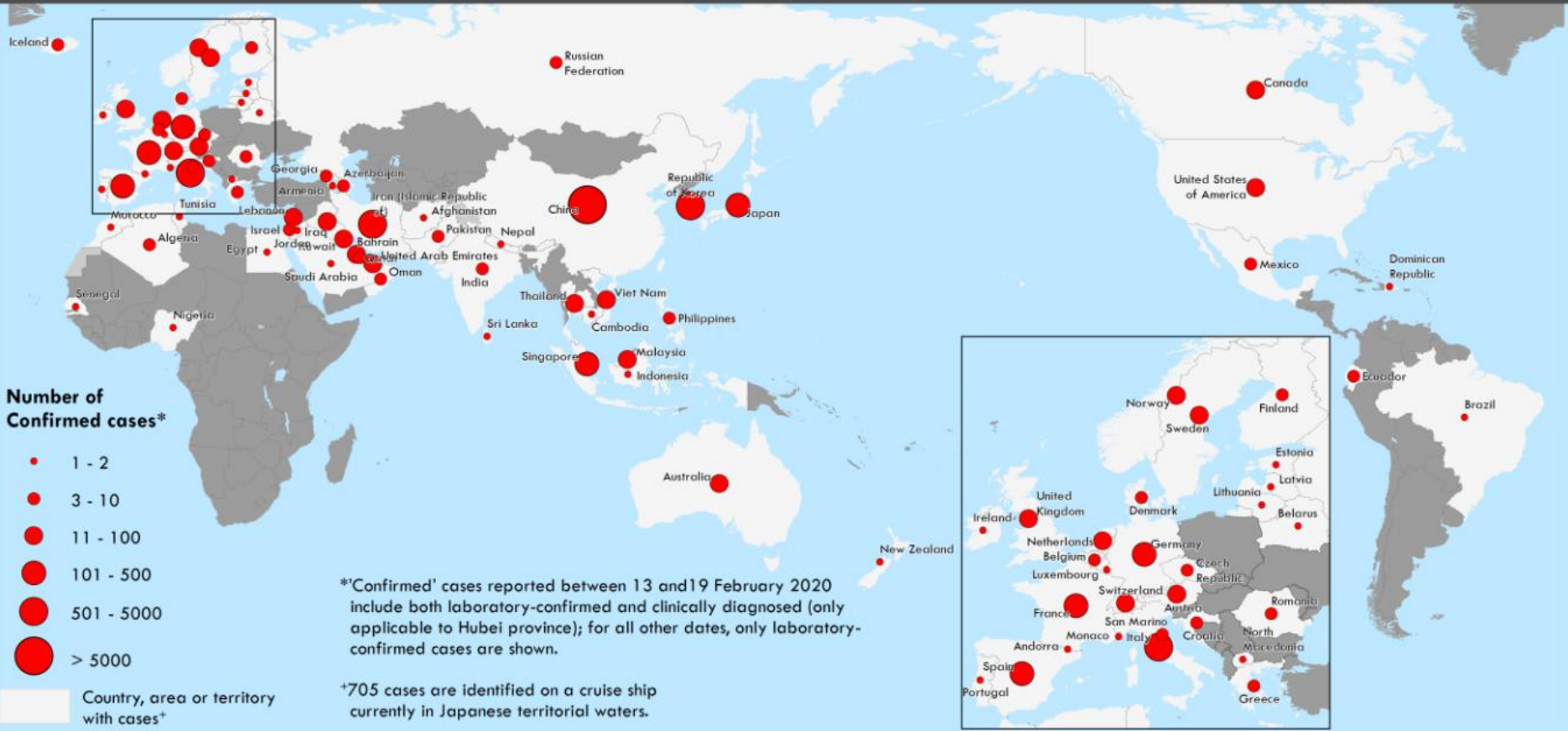
How Many People Are Sick?



Confirmed Cases as of 3/05/20 Reported by the World Health Organization and CDC	
Total	946,888 cases; 3,305 deaths
China	80,422 cases; 3,013 deaths
United States	100 cases and 10 deaths - 17 Person to Person - 30 Travel Related - 53 Under Investigation
Virginia	0 cases; (18 PUIs ruled out)

WHO Frequency Map

Distribution of COVID-19 cases as of 03 March 2020



Data Source: World Health Organization, National Health Commission of the People's Republic of China
 Map Production: WHO Health Emergencies Programme

How Is the U.S. Responding?

- ❖ Public health entry screening at 20 U.S. airports
- ❖ CDC Travel Advisories/Warnings: Level 3(avoid all nonessential travel) - China, South Korea, Italy, Iran
- ❖ Entry of foreign nationals suspended: China, Iran
- ❖ Surveillance & Risk Stratification
- ❖ Diagnostic lab test developed
- ❖ Ongoing research for medical tx for COVID-19
- ❖ Started on vaccine development
- ❖ Information and guidance to public and medical

What Is the Current Risk in U.S.?

(As of 3/05/2020)

- 100 total cases in the U.S. in 13 States
 - 30 cases Travel-related
 - 17 cases by Person to person spread
 - 53 Under Investigation
- Not spreading widely in the community in the U.S.
- Immediate risk to general public remains low
- Greatest at-risk: family members and healthcare workers caring for patients with COVID-19
- Situation is rapidly evolving

What's the Situation in Virginia?

(As of 3/05/2020)

- 0 cases of COVID-19 in Virginia
- 21 Persons Under Investigation (PUI):
 - ❖ 18 have tested negative for virus
- 339 travelers under public health monitoring (14 days):
 - ❖ 231 have successfully completed monitoring
 - ❖ 95 currently medium risk
 - ❖ 13 currently low risk

How is VDH Responding?

- ❖ Established ICS structure to coordinate the public health response
 - Daily command meetings
 - Situation reports 3x/week
- ❖ Working closely with clinical providers and CDC EOC to find, isolate, and diagnose cases early to help prevent further spread
- ❖ Monitoring patients who are being tested for the virus
- ❖ Identifying contacts of those patients

How is TRHD Responding?

- ❖ Established Incident Management Team to coordinate response & prepare for escalating event;
- ❖ Engaging with hospitals, clinical providers, schools, & other community partners to raise awareness and provide most current information;
- ❖ Conducting Surveillance & Investigation of any potential suspect cases (Persons Under Investigation = PUI);
- ❖ Identifying all at-risk travelers returning from China and supervising their self-monitoring.

Take Home Messages

- ❖ Rapidly evolving situation
 - Case counts will grow in the coming days and weeks
 - Interim guidance will change
- ❖ Much more to learn about this coronavirus: e.g., source, transmission factors, and risks
- ❖ Influenza is still our #1 infectious threat in the U.S. currently (need to promote respiratory infection prevention in general)
- ❖ Updates will be communicated via www.vdh.virginia.gov/coronavirus as more information is available.

Resources

Virginia Department of Health (VDH)

- 35 Local Health Districts
- www.vdh.virginia.gov/coronavirus
- Respiratory@vdh.virginia.gov

Centers for Disease Control and Prevention (CDC)

- www.cdc.gov/coronavirus/2019-nCoV
 - This page will be updated regularly at noon Mondays through Fridays. Numbers close out at 4 p.m. the day before reporting.

World Health Organization (WHO)

- www.who.int/emergencies/diseases/novel-coronavirus-2019