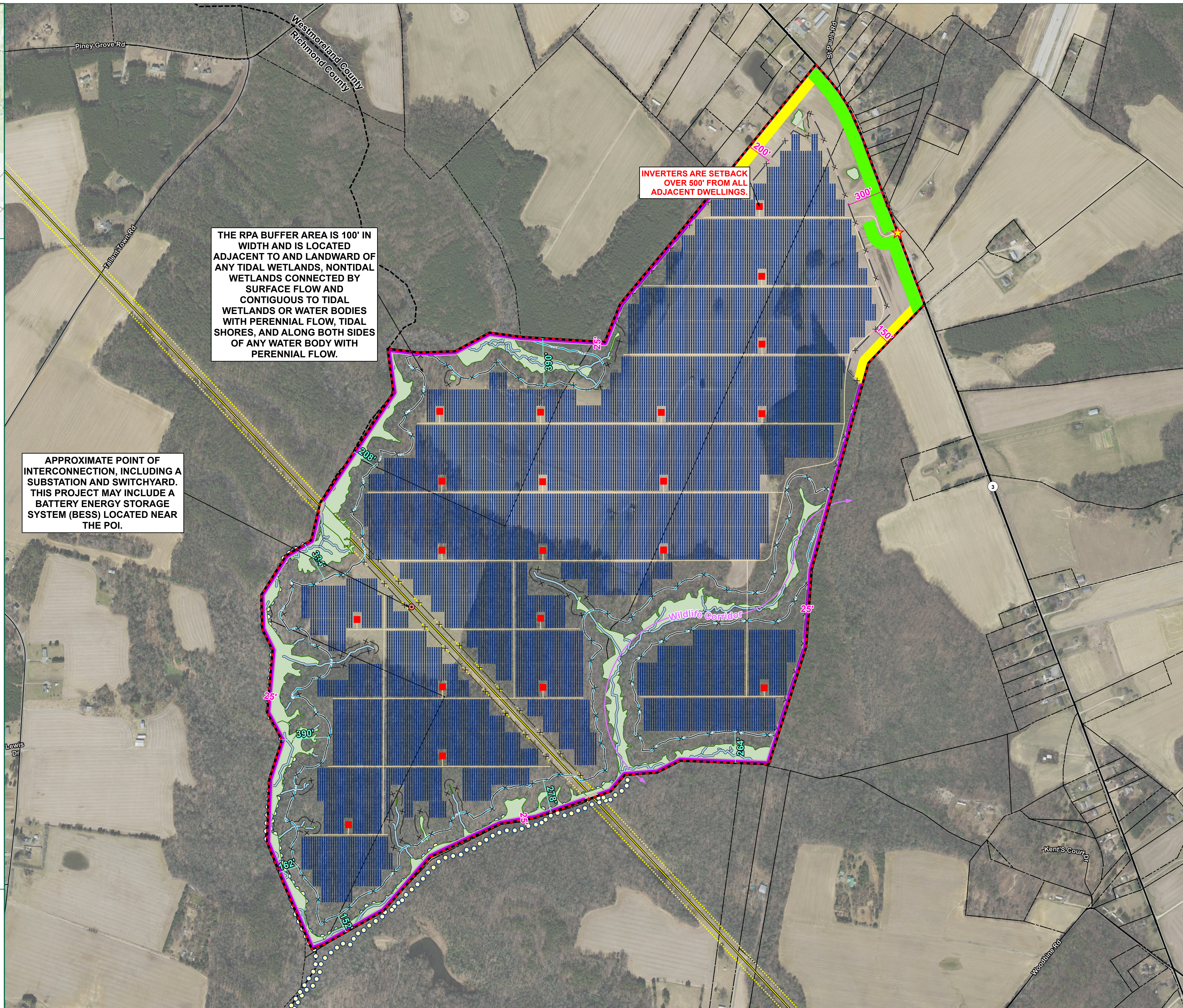





NOTES:

1. LAYOUT IS SUBJECT TO CHANGE. NOT FOR CONSTRUCTION.
2. THE POINT OF INTERCONNECTION IS APPROXIMATE AND MAY INCLUDE AN ELECTRICAL SUBSTATION. THE POINT OF INTERCONNECTION MAY ALSO INCLUDE A BATTERY ENERGY STORAGE SYSTEM.
3. SETBACKS ARE FROM WESTMORELAND COUNTY CODE OF ORDINANCES. SETBACKS ARE AT LEAST 75' FROM THE FRONT PROPERTY LINE, 25' FROM ALL SIDE AND REAR PROPERTY LINES. AN INCREASED SETBACK OF 200' IS PROPOSED IN THE NORTH, 300' ALONG THE RIGHT-OF-WAY, AND A 150' SETBACK IS PROPOSED IN THE SOUTHEAST IN THE AGRICULTURAL FIELD.
3. WETLANDS AND STREAMS ONSITE HAVE BEEN DELINEATED.
4. FLOOD ZONE DATA FROM FEMA'S NATIONAL FLOOD HAZARD LAYER.
5. TAX PARCEL DATA FROM WESTMORELAND COUNTY GIS.
6. AERIAL IMAGERY FROM VGIN.



<div><div>TIMMONS GROUP YOUR VISION ACHIEVED THROUGH OURS.</div></div> <div>1001 Boulders Parkway, Suite 200 Richmond, VA 23225 TEL 804.200.6900 www.timmons.com</div>																												
<div>Renewable Energy Services</div> <div><div>5315 Hightgate Dr. Suite Durham, NC 27713 TEL 919.723.7473 www.r-es-services.com</div></div>																												
<div>PROJECT NAME & LOCATION</div> <div><div>KINGS HIGHWAY SOLAR</div><div>WESTMORELAND COUNTY, VIRGINIA</div></div>																												
<div>DATE</div> <div>10/31/2024</div>																												
<div>PROJECT NUMBER</div> <div>49751.008</div>																												
<div>PROJECT NAME</div> <div>KINGS HIGHWAY SOLAR</div>																												
<div>DESIGNED BY / DRAWN BY</div> <div>J. STICKLEY</div>																												
<div>These exhibits and associated documents are the exclusive property of TIMMONS GROUP and may not be reproduced in whole or in part and shall not be used for any purpose whatsoever, including, but not limited to construction, lending, broker commissions, clearing without the express written consent of TIMMONS GROUP.</div>																												
<div>REVISIONS</div> <table><thead><tr><th>#</th><th>DATE/ID</th><th>DESCRIPTION</th></tr></thead><tbody><tr><td>1</td><td>11/02/25</td><td>REVISED PER COMMENTS</td></tr><tr><td>2</td><td>01/26/25</td><td>REVISED PER STAFF REPORT</td></tr><tr><td>3</td><td>02/06/25</td><td>REVISED TO INCLUDE BESS</td></tr><tr><td>4</td><td>04/04/25</td><td>REVISED PER LANDSCAPING UPDATE</td></tr><tr><td> </td><td> </td><td> </td></tr><tr><td> </td><td> </td><td> </td></tr><tr><td> </td><td> </td><td> </td></tr><tr><td> </td><td> </td><td> </td></tr></tbody></table>		#	DATE/ID	DESCRIPTION	1	11/02/25	REVISED PER COMMENTS	2	01/26/25	REVISED PER STAFF REPORT	3	02/06/25	REVISED TO INCLUDE BESS	4	04/04/25	REVISED PER LANDSCAPING UPDATE												
#	DATE/ID	DESCRIPTION																										
1	11/02/25	REVISED PER COMMENTS																										
2	01/26/25	REVISED PER STAFF REPORT																										
3	02/06/25	REVISED TO INCLUDE BESS																										
4	04/04/25	REVISED PER LANDSCAPING UPDATE																										
<div>DRAWING DESCRIPTION</div> <div>PRELIMINARY SITE PLAN</div>																												
<div><div>SCALE (FEET)</div><div>040080</div><div>PLANS PRINTED AS 11X17 ARE HALF SCALE</div><div>H: 1" = 400' C3.0</div></div>																												

GENERAL NOTES

PRE-CONSTRUCTION

- CONTRACTOR IS RESPONSIBLE FOR CONTACTING "MISS UTILITY" AT 1.800.552.7001 FOR LOCATION OF ALL UTILITY LINES. TREES SHALL BE LOCATED A MINIMUM OF 5 FEET FROM SEWER/WATER CONNECTIONS. NOTIFY LANDSCAPE ARCHITECT OF CONFLICTS.
- VERIFY ALL PLANT MATERIAL QUANTITIES ON THE PLAN PRIOR TO BIDDING. PLANT LIST TOTALS ARE FOR CONVENIENCE ONLY AND SHALL BE VERIFIED PRIOR TO BIDDING.
- PROVIDE PLANT MATERIALS OF QUANTITY, SIZE, GENUS, SPECIES, AND VARIETY INDICATED ON PLANS. ALL PLANT MATERIALS AND INSTALLATION SHALL COMPLY WITH RECOMMENDATIONS AND REQUIREMENTS OF ANSI Z60.1 "AMERICAN STANDARD FOR NURSERY STOCK". IF SPECIFIED PLANT MATERIAL IS NOT OBTAINABLE, SUBMIT PROOF OF NON AVAILABILITY TO THE LANDSCAPE ARCHITECT, TOGETHER WITH PROPOSAL FOR USE OF EQUIVALENT MATERIAL.
- PROVIDE AND INSTALL ALL PLANTS AS IN ACCORDANCE WITH DETAILS AND CONTRACT SPECIFICATIONS.
- SOIL TESTS SHALL BE PERFORMED TO DETERMINE SOIL CHARACTER AND QUALITY. NECESSARY SOIL AMENDMENTS SHALL BE PERFORMED PER TEST RESULTS TO ENSURE PLANT HEALTH.

CONSTRUCTION/INSTALLATION

- LANDSCAPE ARCHITECT RESERVES THE RIGHT TO REJECT ANY PLANTS AND MATERIALS THAT ARE IN AN UNHEALTHY OR UNSIGHTLY CONDITION, AS WELL AS PLANTS AND MATERIALS THAT DO NOT CONFORM TO ANSI Z60.1 "AMERICAN STANDARD FOR NURSERY STOCK"
- LABEL AT LEAST ONE TREE AND ONE SHRUB OF EACH VARIETY AND CALIPER WITH A SECURELY ATTACHED, WATERPROOF TAG BEARING THE DESIGNATION OF BOTANICAL AND COMMON NAME.
- INSTALL LANDSCAPE PLANTINGS AT ENTRANCES/EXITS AND PARKING AREAS ACCORDING TO PLANS SO THAT MATERIALS WILL NOT INTERFERE WITH SIGHT DISTANCES.
- CONTRACTOR IS RESPONSIBLE FOR WATERING ALL PLANT MATERIAL DURING INSTALLATION AND UNTIL FINAL INSPECTION AND ACCEPTANCE BY OWNER. CONTRACTOR SHALL NOTIFY OWNER OF CONDITIONS WHICH AFFECTS THE GUARANTEE.

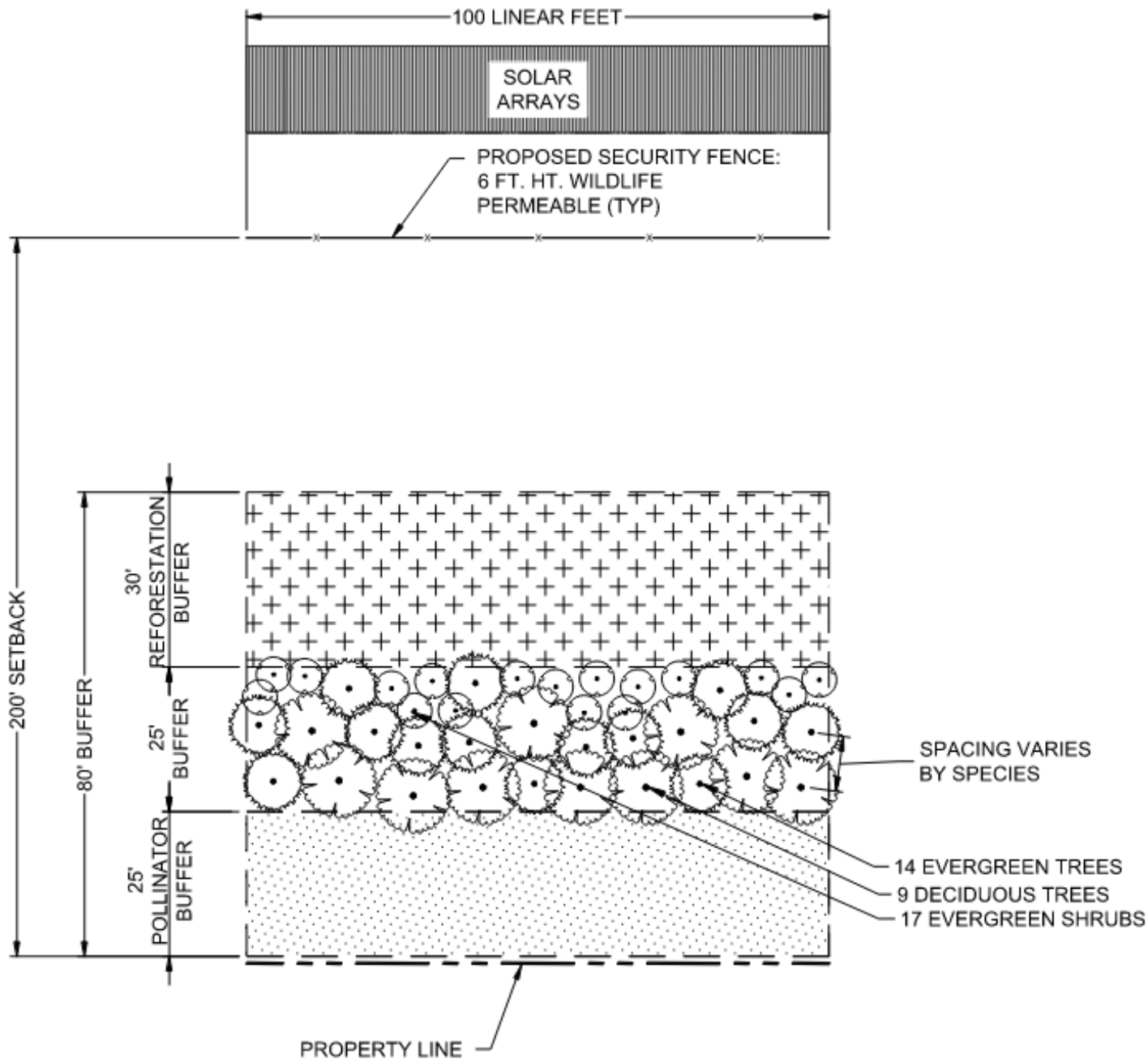
INSPECTIONS/GUARANTEE

- UPON COMPLETION OF LANDSCAPE INSTALLATION, THE LANDSCAPE CONTRACTOR SHALL NOTIFY THE GENERAL CONTRACTOR WHO WILL VERIFY COMPLETENESS, INCLUDING THE REPLACEMENT OF ALL DEAD PLANT MATERIAL. CONTRACTOR IS RESPONSIBLE FOR SCHEDULING A FINAL INSPECTION BY THE LANDSCAPE ARCHITECT.
- ALL EXTERIOR PLANT MATERIALS SHALL BE GUARANTEED FOR ONE FULL YEAR AFTER DATE OF FINAL INSPECTION AGAINST DEFECTS INCLUDING DEATH AND UNSATISFACTORY GROWTH. DEFECTS RESULTING FROM NEGLECT BY THE OWNER, ABUSE OR DAMAGE BY OTHERS, OR UNUSUAL PHENOMENA OR INCIDENTS WHICH ARE BEYOND THE CONTRACTORS CONTROL ARE NOT THE RESPONSIBILITY OF THE CONTRACTOR.
- PLANT MATERIAL QUANTITIES AND SIZES WILL BE INSPECTED FOR COMPLIANCE WITH APPROVED PLANS BY A SITE PLAN REVIEW AGENT OF THE PLANNING DEPARTMENT PRIOR TO THE RELEASE OF THE CERTIFICATE OF OCCUPANCY.
- REMOVE ALL GUY WIRES AND STAKES 12 MONTHS AFTER INSTALLATION.

1 GENERAL NOTES

NTS

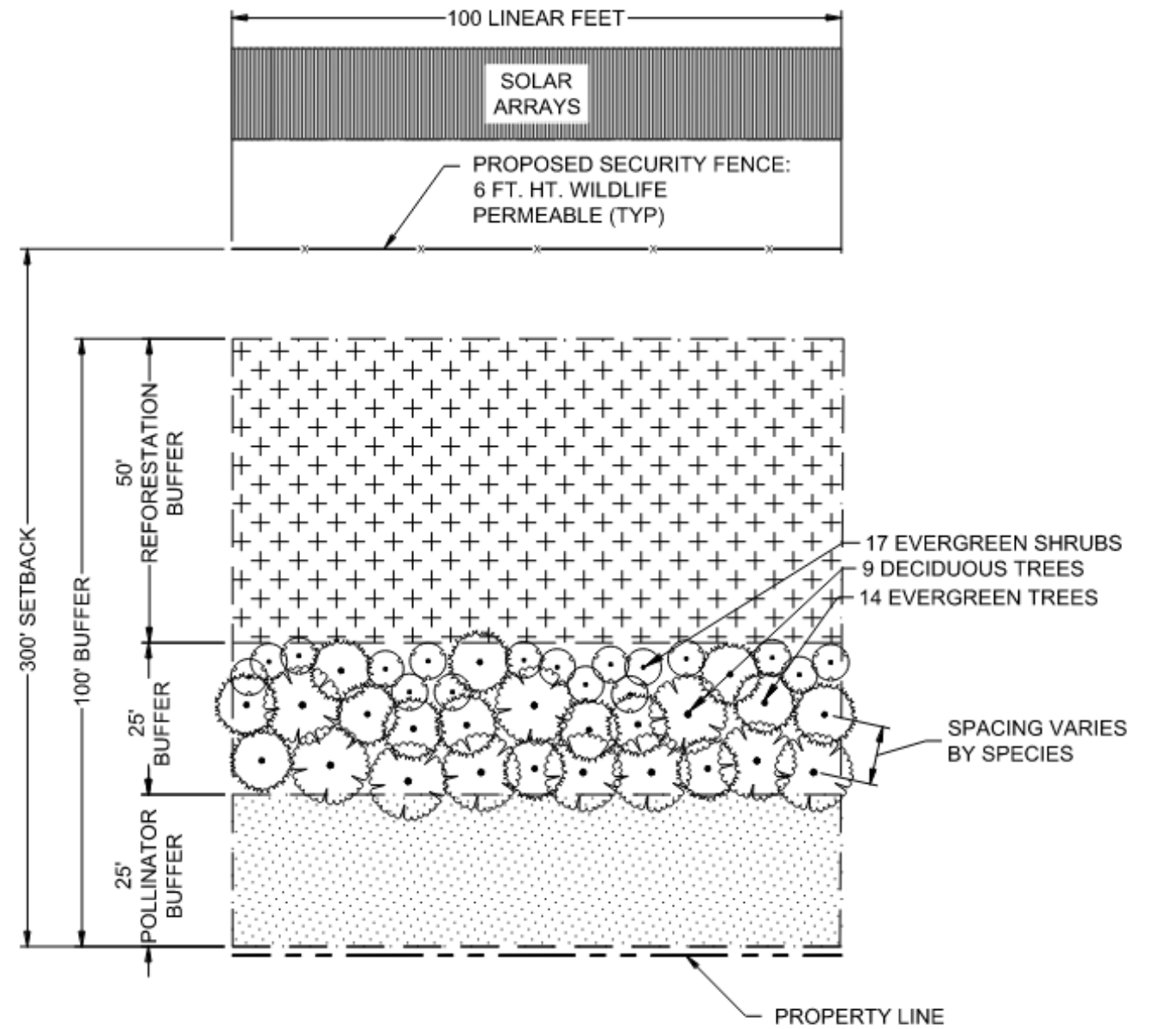
VEGETATIVE BUFFER PLANTING TEMPLATE



3 VEGETATIVE BUFFER TEMPLATE (80')

NTS

VEGETATIVE BUFFER PLANTING TEMPLATE



4 VEGETATIVE BUFFER TEMPLATE (100')

NTS

VEGETATIVE BUFFER NOTES

- PROVIDE LANDSCAPE BUFFER CONSISTING OF A STAGGERED ROW OF EVERGREEN AND DECIDUOUS PLANT MATERIALS THAT ARE NON-INVASIVE, NATIVE, POLLINATOR, AND WILDLIFE FRIENDLY.
- PRESERVE EXISTING WETLANDS AND WOODLANDS TO SERVE AS VEGETATIVE BUFFER. IF EXISTING TREES AND VEGETATION ARE DISTURBED, PROVIDE NEW BUFFER PLANTINGS. WHERE INTERMITTENT EXISTING TREES OR SHRUBS EXIST WITHIN A PROPOSED BUFFER LOCATION, PROPOSED SCREENING MUST BE FIELD-LOCATED AND PLANTED AS NEEDED TO SUPPLEMENT THE EXISTING VEGETATIVE SCREENING.
- ENSURE THAT ALL PLANT MATERIAL MEETS REQUIREMENTS IN THE WESTMORELAND COUNTY LANDSCAPE ORDINANCE.
- REFORESTATION SHALL BE COMPRISED OF PINUS TAEDA (LOBLOLLY PINE) SEEDLINGS SPACED AT AN AVERAGE 6' OC. VARY SPACING PATTERN TO AVOID A MONOTONOUS APPEARANCE.
- EVERGREEN TREES PLANTED IN THE BUFFER MUST BE AT LEAST SIX (6) FEET TALL AT TIME OF PLANTING. LARGE CANOPY TREES MUST BE AT LEAST TWELVE (12) FEET AT TIME OF PLANTING. SHRUBS MUST BE AT LEAST TWELVE (12) INCHES AT TIME OF PLANTING. (PER ORDINANCE SEC.6-7: SITE LANDSCAPING REQUIREMENTS)
- VARY THE SPECIES USED EVERY 100 LINEAR FEET.
- FENCING MUST BE INSTALLED ON THE INTERIOR OF THE BUFFER.
- BUFFER MUST BE MAINTAINED IN GOOD CONDITION UNTIL THE FACILITY HAS BEEN DECOMMISSIONED AND REMOVED. IMPLEMENT A THREE-YEAR ESTABLISHMENT AND MAINTENANCE PERIOD TO FACILITY OPTIMAL SURVIVABILITY.


GROUNDCOVER PLANTING NOTES

- GROUNDCOVER ON THE SITE SHALL CONSIST OF NON-INVASIVE SPECIES WITH NATIVE VEGETATION AND MAINTAINED IN ACCORDANCE WITH THE LANDSCAPING MAINTENANCE PLAN IN ACCORDANCE WITH ESTABLISHED PERFORMANCE MEASURE OF THE APPROVED LANDSCAPING PLAN.
- FOLLOWING INITIAL IMPLEMENTATION OF NOXIOUS WEED AND INVASIVE SPECIES MANAGEMENT PLAN, PREPARE SITE SOIL CONDITIONS FOR SEEDING.
- SEED DISTURBED AREAS WITHIN THE PROJECT AREA, DISTURBED AREAS WITHIN THE SETBACK, AND INSTALLED VEGETATIVE BUFFERS WITH APPROPRIATE POLLINATOR-FRIENDLY NATIVE PLANTS, SHRUBS, GRASSES, FORBES, AND WILDFLOWERS.
- SEED DISTURBED AREAS WITH A TEMPORARY MIXTURE AS NEEDED TO MEET STATE REGULATIONS FOR EROSION AND SEDIMENT CONTROL.
- DURING THE NEXT SUITABLE SEEDING PERIOD (SPRING OR FALL), SOW GROUNDCOVER TO ESTABLISH PERMANENT VEGETATIVE COVER. OPTIMAL SEED GERMINATION OCCURS AFTER OCTOBER 15 AND BEFORE APRIL 15. IF SEEDING IS CONDUCTED OUTSIDE OF OPTIMAL SEED GERMINATION PERIODS, PAIR A SEASONALLY-APPROPRIATE COVER CROP WITH PERMANENT SEED MIXTURE TO SUPPORT SOIL STABILIZATION AND EROSION AND SEDIMENT CONTROL DURING SEED ESTABLISHMENT PERIOD.
- USE RECOMMENDED SEEDING RATES (SPECIFIC TO MIXTURE) AND PROPER SEED PACKING FOR OPTIMAL GERMINATION AND SEED ESTABLISHMENT.

- SEEDING NATIVE MEADOW SEED MIX
- A. HAND SEED, DRILL OR DRY BROADCAST WITH A SPREADER OR SEEDING MACHINE.
- DO NOT BROADCAST OR DROP SEED WHEN WIND VELOCITY EXCEEDS 5 MPH.
 - BEFORE SOWING, MIX SEED WITH SEED CARRIER AT A RATIO OF NOT LESS THAN TWO PARTS SEED CARRIER TO ONE-PART SEED.
 - EVENLY DISTRIBUTE SEED BY SOWING EQUAL QUANTITIES IN TWO DIRECTIONS AT RIGHT ANGLES TO EACH OTHER. APPLY HALF THE SEEDING RATE IN EACH DIRECTION.
 - DO NOT USE WET SEED OR SEED THAT IS MOLDY OR OTHERWISE DAMAGED
- B. SOW SEED AT A TOTAL RATE AS INDICATED IN MATERIALS SECTION OF THIS SPECIFICATION.
- C. BRUSH SEED INTO TOP 1/16 INCH OF SOIL. ROLL LIGHTLY, AND WATER WITH FINE SPRAY.
- D. RAKE OR DRAG SEED TO THE REQUIRED DEPTH AND ENSURING SEED-TO-SOIL CONTACT. NO RAKING OR DRAGGING IS NECESSARY IN WET APPLICATIONS.

RECOMMENDED COVER CROPS (TEMPORARY SEEDING)

BOTANICAL NAME	COMMON NAME	SEEDS RATE: POUNDS PER ACRE
AVENA SATIVA	GRAIN OATS	50-100
SETARIA ITALICA	GERMAN MILLET	50
SECALE CEREALE	GRAIN RYE	50-100



ERNST SEEDS

Ernst Conservation Seeds
8884 Mercer Pike
Meadville, PA 16335
(800) 873-3321 Fax (814) 336-5191
www.ernstseed.com

Date: March 21, 2025

Northeast Solar Pollinator Buffer Mix - ERNMX-610

Botanical Name	Common Name	Price/Lb
37.00 % Schizanthum scaparium, Fort Indiantown Gap-PA Ecotype	Little Bluestem, Fort Indiantown Gap-PA Ecotype	15.87
36.30 % Bouteloua ruitpendula, Butte	Sideoats Gramma, Butte	30.91
4.00 % Chamaecrista fasciculata, PA Ecotype	Partridge Pea, PA Ecotype	13.00
4.00 % Coreopsis lanceolata	Lanceleaf Coreopsis	31.20
4.00 % Echinacea purpurea	Purple Coneflower	46.80
3.30 % Rudbeckia hirta	Blackeyed Susan	33.80
2.30 % Helopsis helianthoides, PA Ecotype	Oxeye Sunflower, PA Ecotype	36.40
1.60 % Penstemon digitalis, PA Ecotype	Tall White Beardtongue, PA Ecotype	182.00
1.50 % Asclepias tuberosa, PA Ecotype	Butterfly Milkweed, PA Ecotype	468.00
1.00 % Pycnanthemum tenuifolium	Narrowleaf Mountainmint	260.00
0.80 % Liatris spicata	Marsh Blazing Star	273.00
0.70 % Monarda fistulosa, Fort Indiantown Gap-PA Ecotype	Wild Bergamot, Fort Indiantown Gap-PA Ecotype	104.00
0.70 % Senecio heliocarpus, VA & WV Ecotype	Wild Senna, VA & WV Ecotype	31.20
0.60 % Zizia aurea, PA Ecotype	Golden Alexanders, PA Ecotype	78.00
0.50 % Asclepias incarnata, PA Ecotype	Swamp Milkweed, PA Ecotype	192.40
0.40 % Aster laevis, NY Ecotype	Smooth Blue Aster, NY Ecotype	364.00
0.40 % Aster novae-angliae	New England Aster	390.00
0.30 % Baptisia australis, Southern WV Ecotype	Blue False Indigo, Southern WV Ecotype	104.00
0.30 % Tradescantia subaspera, VA Ecotype	Zigzag Spiderwort, VA Ecotype	156.00
0.20 % Solidago nemoralis, PA Ecotype	Gray Goldenrod, PA Ecotype	312.00
0.10 % Aster prenanthoides, PA Ecotype	Zigzag Aster, PA Ecotype	520.00

100.00 % **Mix Price/Lb Bulk: \$44.72**

Seeding Rate: Seed at 15 lbs/acre with 30 lbs/acre of a cover crop. For a cover crop use either grain oats (1 Jan to 31 Jul) or grain rye (1 Aug to 31 Dec).

Grasses & Grass-like Species - Herbaceous Perennial; Herbaceous Flowering Species - Herbaceous Perennial; Pollinator Favorites; Solar Sites

Price quotes guaranteed for 30 days.
All prices are FOB Meadville, PA.
Please check our web site at www.ernstseed.com for current pricing when placing orders.

5 POLLINATOR SEED MIX (FOR USE IN BUFFER AREAS)

NTS

BOTANICAL NAME	COMMON NAME	MINIMUM HEIGHT AT PLANTING	SPACING	GROWTH RATE (PER YEAR)	CONTAINER
LARGE DECIDUOUS TREES					
QUERCUS ALBA	WHITE OAK	12 FT.	20 FT.	2 FT.	B&B
QUERCUS RUBRA	RED OAK	12 FT.	20 FT.	1.5 FT.	B&B
GYMNOCLADUS DIOICUS	KENTUCKY COFFEE TREE	12 FT.	20 FT.	1.5 FT.	B&B
PLATANUS OCCIDENTALIS	SYCAMORE	12 FT.	20 FT.	2 FT.	B&B
EVERGREEN TREES					
ILEX OPACA	AMERICAN HOLLY	6 FT.	10 FT.	1 FT.	B&B
MAGNOLIA GRANDIFLORA	SOUTHERN MAGNOLIA	12 FT.	20 FT.	1.5 FT.	B&B
JUNIPERUS VIRGINIANA 'BRODIE'	EASTERN RED CEDAR	6 FT.	10 FT.	2 FT.	B&B
PINUS TAEDA	LOBLOLLY PINE	6 FT.	10 FT.	2 FT.	B&B
EVERGREEN SHRUBS					
ILEX DECIDUA	POSSUM-HAW	2 FT.	6 FT.	1 FT.	B&B OR CONTAINER
ILEX CORNUTA 'BUFORDII'	BUFORD HOLLY	2 FT.	6 FT.	2 FT.	B&B OR CONTAINER
MYRICA CERIFERA	SOUTHERN WAX MYRTLE	2 FT.	6 FT.	1 FT.	B&B OR CONTAINER
REFORESTATION					
PINUS TAEDA	LOBLOLLY PINE	SEEDLING	6 FT. ON CENTER	2 FT.	

2 RECOMMENDED PLANT LIST

NTS

